

# Linear OSCO<sup>®</sup> OPERATORS

## SL Series

### COMMON FEATURES

- Black or tan polyethylene covers
- Reliable chain drive
- Pad mount standard; post mount optional
- Exterior reset button
- UL325/UL991 compliant 24 VDC control board
- Manual disconnect

### SLC COMMERCIAL

- 1/2 or 1 HP continuous-duty PSC motor
- 115 VAC or 230 VAC single phase

### SLD COMMERCIAL/RESIDENTIAL

- DC-powered battery back-up with seamless transition
- Full-time 1/2 HP DC motor
- Selectable fail-safe or fail-secure modes of operation
- Solar power capable

### SLR RESIDENTIAL

- 1/2 HP PSC motor
- 115 VAC or 230 VAC single phase

## SLIDE GATE OPERATORS

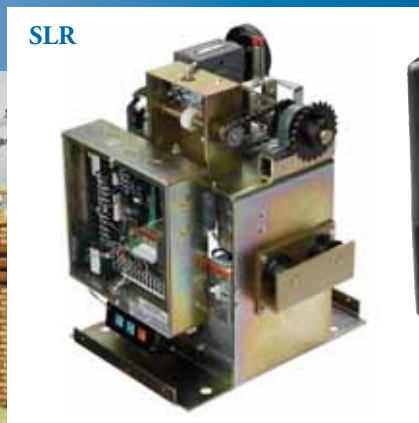
SLC



SLD



SLR



All Models ETL Listed;  
UL325 Compliant



Supporters and Proud Members of



## ELECTRICAL

- Integral entrapment sensing system with dual multi-turn precision potentiometers for accurate adjustment and enhanced safety
- Continuous-tone entrapment alarm with reset button
- Integrated warning beeper during gate movement
- 15 diagnostic LEDs on board for ease of setup and troubleshooting
- Selectable pre-start alarm with provision for ADA compliant visual pre-start and run alarm
- AC and DC power available for access control accessories
- Integrated maximum run and auto close timer (0-124 seconds)
- Built-in master/slave capability using 3-wire shielded cable

## MECHANICAL

- Heavy-duty, zinc-plated, steel chassis
- Easy-to-operate emergency manual disconnect handle
- 1/2 HP #41 chain, 1 HP #40 chain - 31' included
- Universal pad mount standard; optional post mount kit

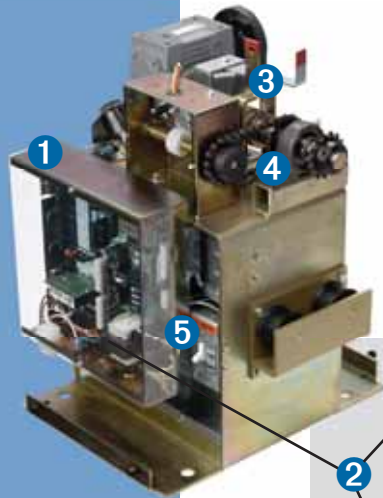
## CAUTIONS



- Automatic gates not for pedestrians
- Automatic gate operators designed for vehicular traffic only; operators are powerful and can cause serious injury or death; **DIRECT ALL PEDESTRIAN TRAFFIC TO SEPARATE PEDESTRIAN GATE**
- UL325 requires use of contact or non-contact anti-entrapment devices
- ASTM F2200 requires that all exposed rollers are covered

## SL SERIES SLIDE GATE OPERATOR SPECIFICATIONS

Model	HP	Voltage (Single Phase)	Drive Type	Maximum Gate Length	Maximum Gate Weight	Gate Speed	Maximum Cycles	
SLC	SLC-2	1 / 2	115 or 230 V	#41 chain	37'	1000 lbs	11"/sec	continuous duty
	SLC-1	1	115 or 230 V	#40 chain	45'	2000 lbs	11"/sec	continuous duty
SLD	SLD-211	1/2	24 VDC solar optional	#41 chain	25'	700 lbs	8"/sec	30/hour
SLR	SLR-211	1/2	115 V	#41 chain	25'	500 lbs	11"/sec	150/day
	SLR-221	1/2	230 V	#41 chain	25'	500 lbs	11"/sec	150/day



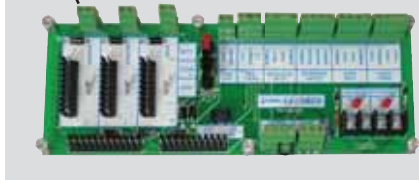
### 1 Rotary Mechanical Limits

Easy access inside control box

### 2 Solid-State Control Circuitry

- UL325/UL991 compliant 24 VDC control board
- Full featured for access control, security, and entrapment protection

- Optional connections module provides plug-in loop detector capability, European-style plug-in connectors, and easy-to-read labeling



### 3 Manual Disconnect

- Simple and secure manual operation during power failure or emergency
- Optional remote cable kit for outside-the-gate access

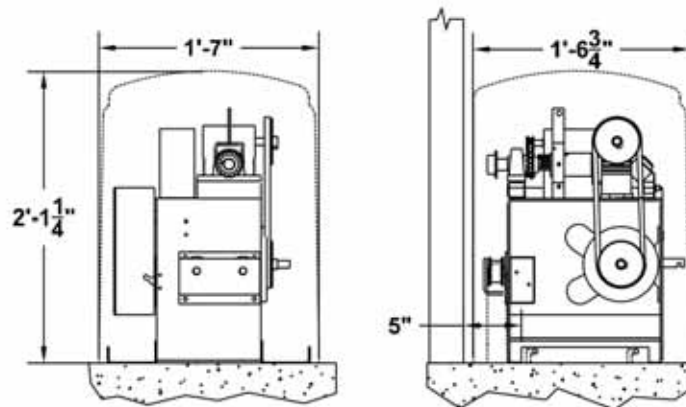
### 4 Heavy-Duty Components

Gear reducer and pillow block bearing for smooth, reliable, quiet power transmission

### 5 Standard Convenience Features

- Exterior reset button
- Power on/off button
- Accessory power outlet on 115 V machines
- 3-button station

## Dimensions



**Linear**  **OSCO**  
**OPERATORS**

LINEAR  
(800) 421-1587 • www.linearcorp.com

OSCO, a subsidiary of Linear  
(800) 333-1717 • www.operatorspecialty.com